

seventies

Aufbaustrahler

Montageanleitung



Technische Daten

Hersteller:	Mawa Design	CE
Artikel Nr.:	se-22-(1-5)	
Netzspannung:	230 V / 50 Hz	
Schutzklasse:	I	
Schutzgrad:	IP20	
LED:	LED Citizen	
	700 mA, 3000 K, CRI >90	
Leistung:	26 W	
Lichtstrom:	2400lm	

Mögliche Konverter

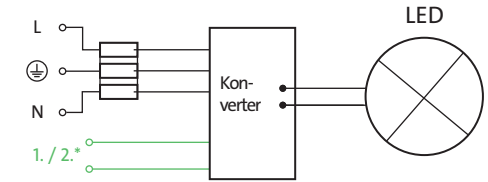
1. Roal / Strato 700 mA:	1 - 10 V
Spannung / AC:	120 / 230 / 240 / 277 V ~
Dimmung:	10 - 100 %
Strahlermaße:	ø 90 mm / L: 150 mm
2. TCI JOLLY DALI BI / 700 mA:	DALI
Spannung / AC:	220 - 240 V ~
Dimmung:	0,5 - 100 %
Strahlermaße:	ø 90 mm / L: 180 mm

3. EP-tronics LD25W-TE / 700 mA:	abschnittsdimmbar
Spannung / AC:	120 / 230 V ~
Dimmung:	20 - 100 %
Strahlermaße:	ø 90 mm / L: 180 mm

Baureihe 70's
geprüft durch

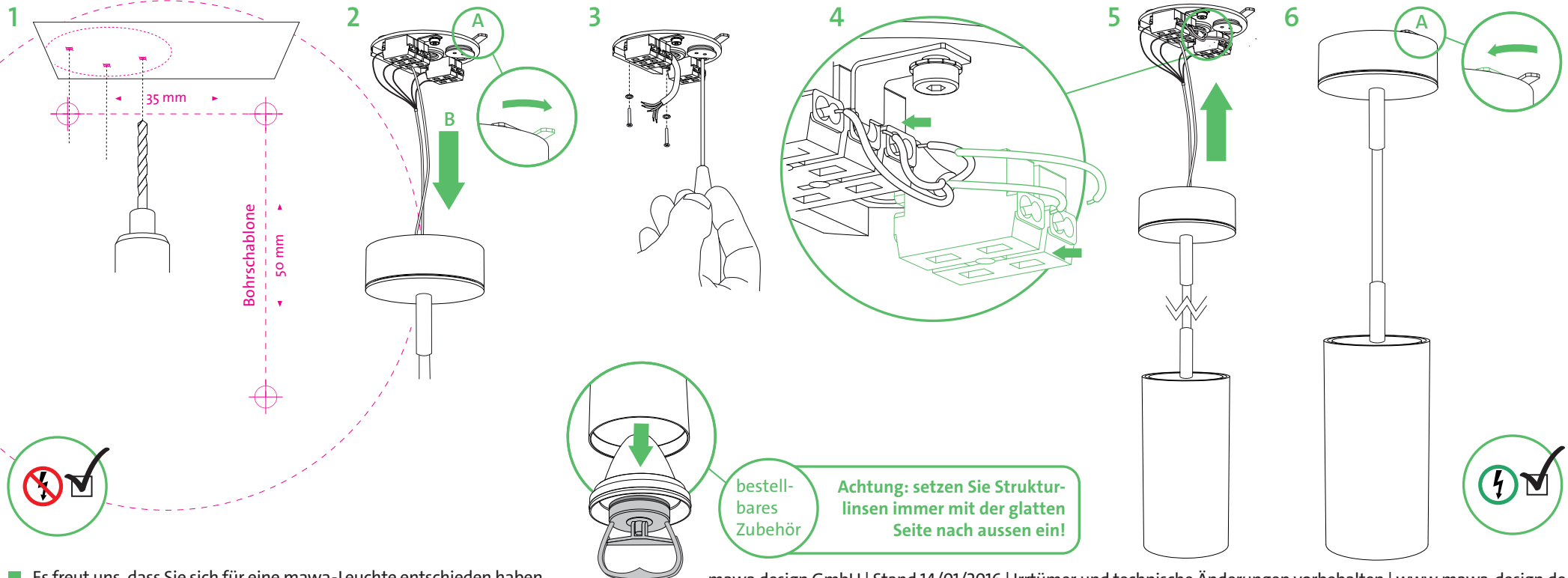


Schaltplan



* 1. bei 1-10V: +/-
2. bei DALI: DALI1 / DALI2

>> Montage nur durch autorisierten Elektroinstallateur!



■ Es freut uns, dass Sie sich für eine mawa-Leuchte entschieden haben.

seventies


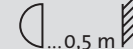
Mounted spotlight

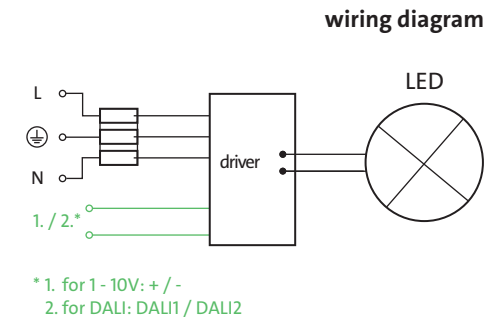
Assembly instructions

Technical Data		CE
Manufacturer:	Mawa Design	
Article no.:	se-22-(1-5)	
Line voltage:	230 V / 50 Hz	
Protection class:	I	
Degree of protection:	IP20	
LED:	LED Citizen	
	700 mA, 3000 K, CRI >90	
Power:	26 W	
Luminous flux:	2400lm	

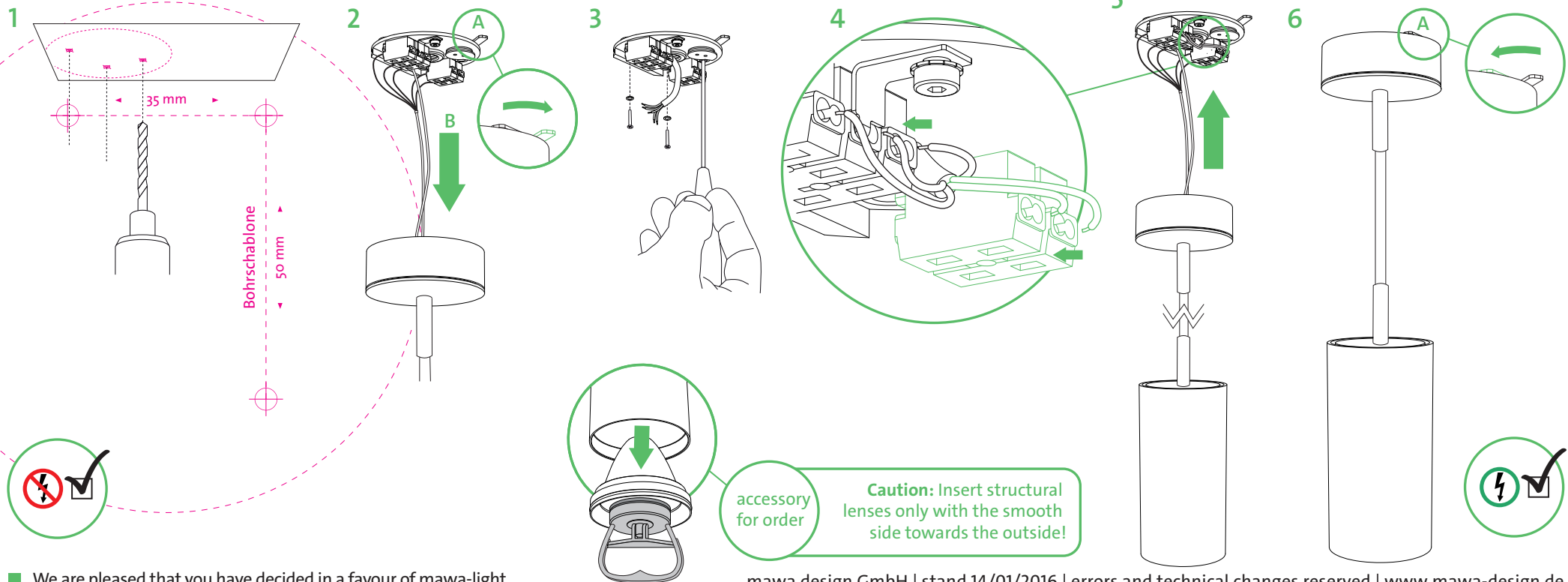
Possible Drivers	
1. Roal / Strato 700 mA:	1 - 10 V
Voltage / AC:	120 / 230 / 240 / 277 V ~
Dimming:	10 - 100 %
Spotlight dimensions:	ø 90 mm / L: 150 mm
2. TCI JOLLY DALI BI / 700 mA:	DALI
Voltage / AC:	220 - 240 V ~
Dimming:	0,5 - 100 %
Spotlight dimensions:	ø 90 mm / L: 180 mm

3. EP-tronics LD25W-TE / 700 mA:	trailing edge phase dimming
Voltage / AC:	120 / 230 V ~
Dimming:	20 - 100 %
Spotlight dimensions:	ø 90 mm / L: 180 mm

Production series 70's tested by  



>> The lamp must be assembled and mounted only by an authorised electrician!



■ We are pleased that you have decided in a favour of mawa-light.

seventies

Aufbaustrahler

Montageanleitung



Technische Daten

Hersteller:	Mawa Design	CE
Artikel Nr.:	se-32	
Netzspannung:	230 V / 50 Hz	
Schutzklasse:	I	
Schutzgrad:	IP20	
LED:	LED Citizen	
	700 mA, 3000 K, CRI >90	
Leistung:	26 W	
Lichtstrom:	2400 lm	

Mögliche Konverter

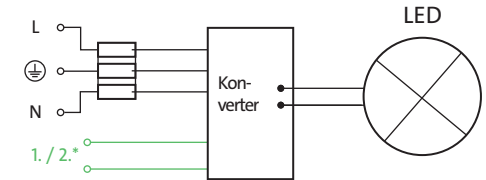
1. Roal / Strato 700 mA:	1 - 10 V
Spannung / AC:	120 / 230 / 240 / 277 V ~
Dimmung:	10 - 100 %
Strahlermaße:	Ø 90 mm / L: 150 mm
2. TCI JOLLY DALI BI / 700 mA:	DALI
Spannung / AC:	220 - 240 V ~
Dimmung:	0,5 - 100 %
Strahlermaße:	Ø 90 mm / L: 180 mm

3. EP-tronics LD25W-TE / 700 mA:	phasen
	abschnitts- dimmbar
Spannung / AC:	120 / 230 V ~
Dimmung:	20 - 100 %
Strahlermaße:	Ø 90 mm / L: 180 mm

Baureihe 70's
geprüft durch

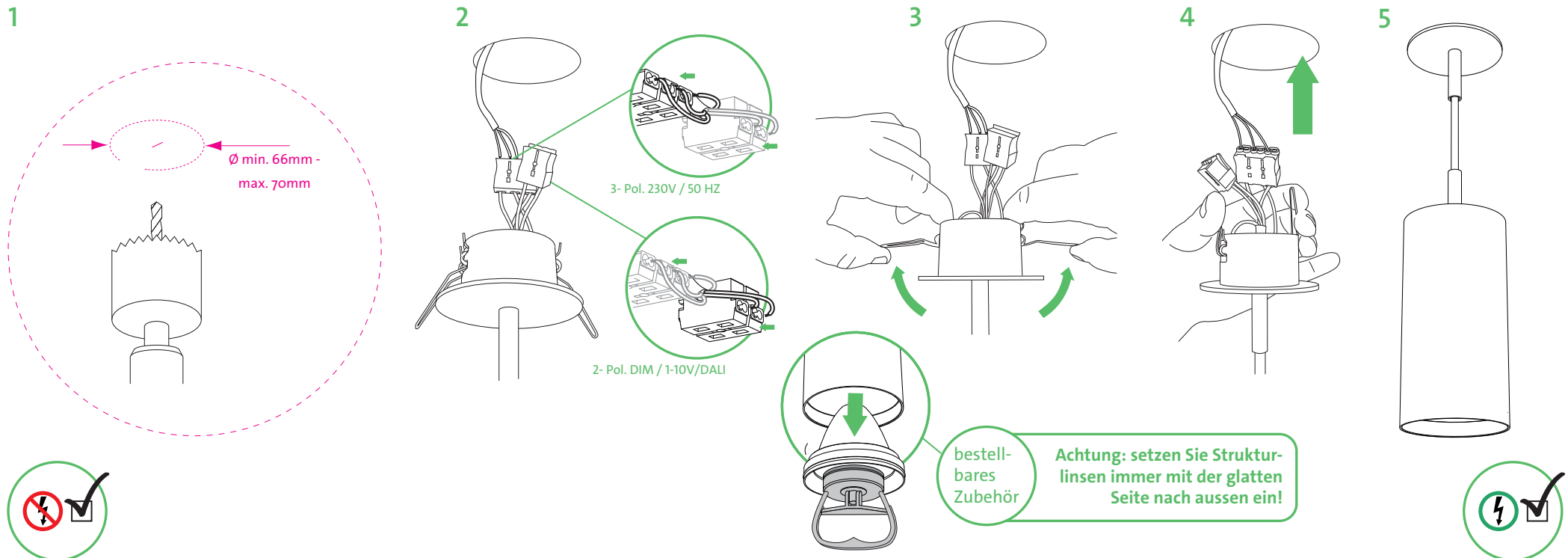


Schaltplan



*1. bei 1-10V: + / -
2. bei DALI: DALI1 / DALI2

>> Montage nur durch autorisierten Elektroinstallateur!



■ Es freut uns, dass Sie sich für eine mawa-Leuchte entschieden haben.

seventies

Mounted spotlight

Assembly instructions

Technical Data

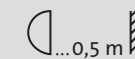
Manufacturer:	Mawa Design	CE
Article no.:	se-32	
Line voltage:	230 V / 50 Hz	
Protection class:	I	
Degree of protection:	IP20	
LED:	LED Citizen	
	700 mA, 3000 K, CRI >90	
Power:	26 W	
Luminous flux:	2400 lm	

Possible Drivers

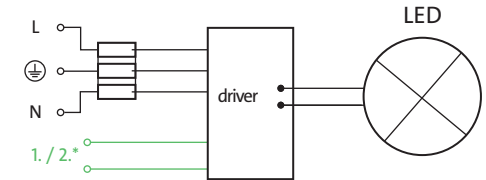
1. Roal / Strato 700 mA:	1 - 10 V
Voltage / AC:	120 / 230 / 240 / 277 V ~
Dimming:	10 - 100 %
Spotlight dimensions:	ø 90 mm / L: 150 mm
2. TCI JOLLY DALI BI / 700 mA:	DALI
Voltage / AC:	220 - 240 V ~
Dimming:	0,5 - 100 %
Spotlight dimensions:	ø 90 mm / L: 180 mm

3. EP-tronics LD25W-TE / 700 mA:	trailing edge phase cat
Voltage / AC:	120 / 230 V ~
Dimming:	20 - 100 %
Spotlight dimensions:	ø 90 mm / L: 180 mm

Production series
70's tested by



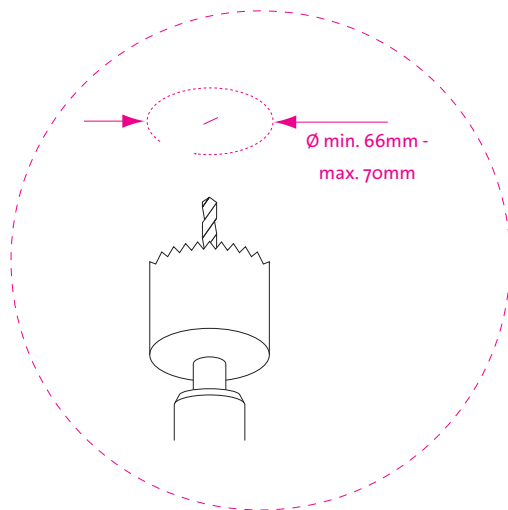
wiring diagram



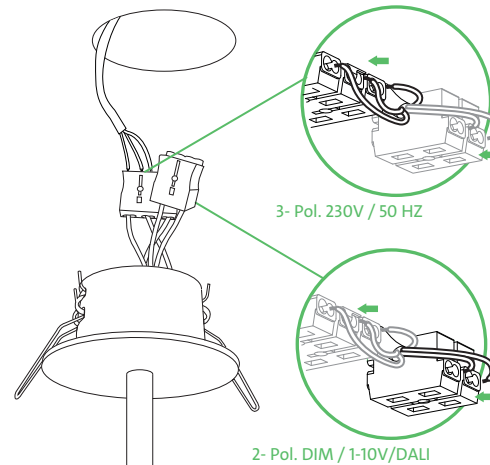
- *1. for 1-10V: +/-
- 2. for DALI: DALI1 / DALI2

>> The lamp must be assembled and mounted only by an authorised electrician!

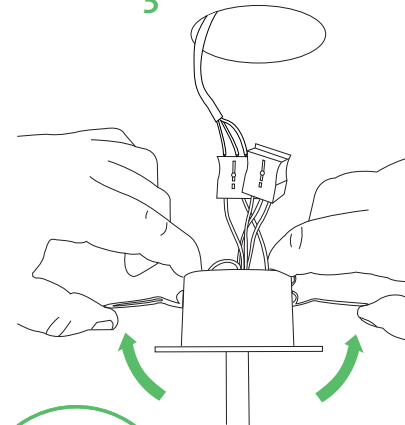
1



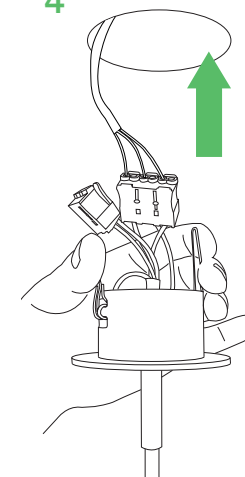
2



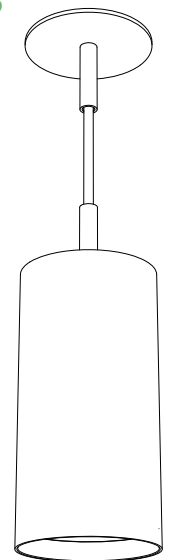
3



4



5



accessory
for order

Caution: Insert structural
lenses only with the smooth
side towards the outside!



■ We are pleased that you have decided in a favour of mawa-light.