

BLOCK LAMP

PLEASE READ THE FOLLOWING CAREFULLY TO ENSURE THE SATISFACTORY AND SAFE OPERATION OF THESE LIGHTS.

THIS SET CONSISTS OF:

- A) BLOCK * 1 (SET OF 2)
- B) E14 LIGHT SET WITH GS PLUG. * 1

HOW TO REPLACE BULB

1. Turn the bulb anti-clock wise and take it out from the socket.
2. Screw-in a new bulb of the same type same rated voltage and wattage.
3. Never use higher wattage bulb.

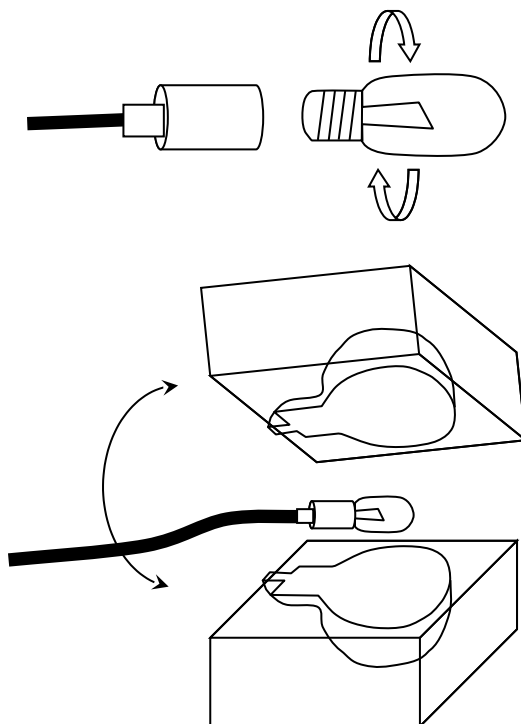
THIS IS NOT A TOY.

CHILDREN SHOULD NOT BE ALLOWED TO PLAY.

WITH THIS LUMINAIRE AS IT IS NOT A TOY.

WARNING:

- * Do not remove or insert lamps while the chain is connected to the supply.
- * Do not connect the chain to the supply while in the packaging.
- * The external flexible cable or cord of this luminaire cannot be replaced; if the cord is damaged, the light set shall be destroyed.
- * When changing a bulb or adjusting the luminaire the product should be unplugged / disconnected from the main supply.
- * Regularly check the unit for signs of damage and security of electrical connections.
- * Check the plug/supply cable/lamp holder regularly for signs of damage/deterioration in the insulation.
- * IF IN ANY DOUBT IN ASSEMBLING, MAINTAINING, REPAIRING THIS PRODUCT PLEASE CONSULT A QUALIFIED ELECTRICIAN.



PLEASE KEEP THESE INSTRUCTIONS FOR FUTURE REFERENCE.



ITEM NO.: 12600100

BULB RATING: 240V 0.8W X 1

MADE IN CHINA 2021