

---

*The Muse Wall Light*

tala.

—

FARROW&BALL

*A collaboration between two pioneering and sustainable  
British brands. Mixing exclusive Farrow & Ball colours  
with Tala lighting technology.*

*An extension of The Muse family*

tala.

An extension of the hugely successful range of portable lamps, The Muse Wall Light gives permanence to the classic lamp aesthetic, bringing pillars of light to your garden wall, front porch or even restaurant wall.



## *The Muse Wall Light*

tala.



- IP44 wet-rated – suitable for outdoors and bathroom
- Replaceable custom LED bulb
- Dim to Warm technology
- Solid brass detailing
- Cast aluminium housing
- Dimmable using the knurled brass dial, or from a centralised system (configurable upon setup)
- Four custom Farrow & Ball colourways



### *Light source (user-replaceable)*

- Smooth dimmable and flicker-free
- 500 lumens
- Dim to Warm technology
- Dimming scale of 2000-2800K
- CRI 97 – no flicker, smooth dimming
- 30,000-hour lifetime (L70)

### *Control*

- Integrated rotary dimmer with the option to be switched to wall control upon installation
- Smooth 0-100% brightness control





*Exclusive colours inspired by the pleasure gardens of the late 18<sup>th</sup> Century*



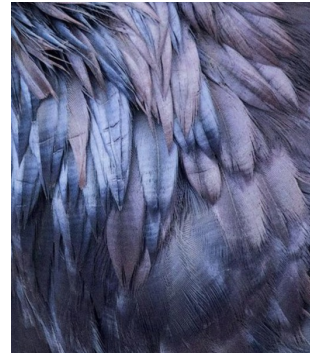


This classic off white is named after the flowering Candlenut tree whose processed fruit was used as a sustainable lighting fuel alternative before electricity took over in the late 19th century. This chalky soft hue is both sophisticated and understated.





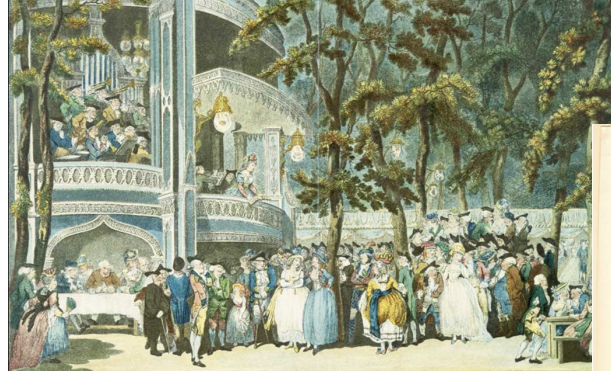
This otherworldly hue references the rich black – and in some lights almost blue – ruff of feathers at the base of a raven's neck. It's complexity only adds to its charm.







This silvery green grey, was popular in the 19th century and just like its namesake has an irresistible intrigue and depth. Its gentle familiar tone works brilliantly in exterior situations.





Pomona references the infamous Bloomsbury group, to whom this rich brick-red pays homage. The warmth of the dark terracotta perfectly juxtaposes the cool concrete it was often paired with in the gardens of Charleston House.



---

*Thank you*